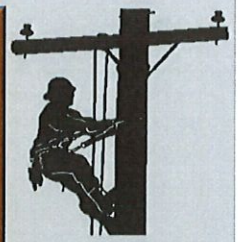


Monthly Tailgate...

because Safety never takes a day off



Hazard Recognition

Hazard recognition saves lives. Stay alert, stay trained, and stay safe. Identifying and mitigating hazards around overhead and underground power lines raises awareness of common electrical hazards. It also reinforces safe practices for the general public and yourselves when working near or around power lines.

- Sagging or broken lines pose a high risk of contact.
- Lines can move due to wind or temperature changes.
- Hidden hazards: Risk of electrocution or arc flash during excavation.
- Often misidentified or not marked properly.
- Ladders, lifts, or poles can contact lines accidentally.
- Wet or stormy weather increases conductivity.
- Tree limbs and vegetation can be in contact with energized lines.
- Ensure only trained personnel operate boom lifts, diggers, or cranes near powerlines.

Hazard Recognition is a very crucial part to what we do every day. ***See Something, Say Something.*** Any person or employee to see an electrical hazard has the responsibility to report the hazard and ensure the hazard is mitigated.

KNOW WHAT TO DO
If you're in an auto accident involving powerlines

- 1** Do **NOT** leave the car, and warn others to stay away.
- 2** CALL 911 to have the utility notified.
- 3** WAIT until a professional has told you it's safe. The **ONLY** reason to exit the vehicle is if it's on fire.
- 4** IF THE CAR IS ON FIRE, Jump clear of the vehicle **WITH FEET TOGETHER**, and **WITHOUT TOUCHING THE CAR AND GROUND AT THE SAME TIME.**
- 5** Continue to **HOP AWAY** with your **FEET TOGETHER** as far as you can.



NC Cooperative Safety

August 2025